



AF1/E

Outdoor temperature sensor

Measuring size: temperature

Output: passive sensor

Highlights: large sensor selection, easy installation, 2-wire connection



Description

The AF1/E outdoor sensor measures the temperature by the sensor inside of the impact and moisture resistant plastic housing in the range of -50 up to +90°C and is with all current sensors available. The temperature probe can be mounted in climate-sensitive areas e.g. on outside walls by avoiding a direct solar radiation.

Technical Specifications

Measurement range temp.	-50...+90°C
Sensor	Pt100, Pt500, Pt1000, Ni1000, KTY, NTC, LM235Z (other on request)
Circuit type	2-wire connection
Measurement current	approx. 1 mA
Electrical connection	screw terminals max. 1,5 mm ²
Leakage resistance	> 100 MOhm, at +20°C (500 V DC)
Housing	polyamide with snap closing screws, colour white like RAL 9010
Cable gland	PG11 high-strength cable gland with strain relief
Dimensions	Housing: L 64 x W 58 x H 34,5 mm
Protection type	IP65
Working temperature	-50...+90°C
Storage temperature	-20...+70°C
Installation	screw fastening
Approvals	CE, EAC, RoHS



Variants

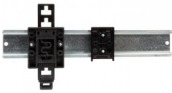
Article Number
Sensor
AF1/E-10
Pt100 (DIN EN 60751 Cl. B)
AF1/E-15
Pt500 (DIN EN 60751 Cl. B)
AF1/E-20
Pt1000 (DIN EN 60751 Cl. B)
AF1/E-30
Ni1000 (whirl-sintered)
AF1/E-40
Ni1000TK5000 (whirl-sintered)
AF1/E-50
NTC1,8k ($\pm 1\%$)
AF1/E-60
LM235Z ($\pm 1\%$)
AF1/E-70
NTC20k ($\pm 1\%$)
AF1/E-80
NTC10k ($\pm 1\%$)
AF1/E-81
KTY 81-110 ($\pm 1\%$)
AF1/E-82
KTY 81-121 ($\pm 1\%$)
AF1/E-83
KTY 81-210 (KTY 10-6) ($\pm 1\%$)



Accessories



DT/G
Digital display



SB/E
Snap-on mounting for DIN rails



SZ/E
Accessories



Dimensional Drawing

